

Product information bottle washing machines



**Now new
with
Rinser
Function**

***Inventor of the bottle
washing machine with
the intelligent bottle
basket***

***INVENTED IN AUSTRIA, BUILT FOR THE
WORLD!***

**2.0 l (or a bottle height of 400 mm),
Beer barrels of up to 30 l in EURO or
DIN standard as well as beverage crates.**



Equipped with a bottle basket as well as a crate carrier insert as standard.



The rinsing and flushing system which was specially developed for the cleaning of bottles, guarantees that all kinds of bottles (beer bottles, milk bottles, juice bottles, water bottles, yoghurt jars and much more) are washed germ-free inside and outside (max. 20 pcs bottles per rinsing cycle).



2 separate rinsing processes (rinsing and flushing) guarantee hygiene at highest level also for small quantities of items to be rinsed.

Efficient and cost efficient.
The strainer makes sure that detached labels from the

The washing program takes 6 minutes and 30 seconds. In a washing cycle of 6 minutes barely 2000 litres of detergent solution are circulated in the system. Depending on the type of bottle up to 54% of the circulation rate are flushed in the bottle and the remainder is flushed outside around the bottle. During the rinsing cycle about 8.7 l of fresh water are flushed in and around the bottles.

Rinsing function:

By pressing the rinsing button, fresh water will be flushed in and around the bottles for 20 sec. Therefore, the GS 21 needs to be switched off and the overflow pipe needs to be removed.

Functional principle:

The fresh water is controlled with a magnetic valve and conveyed into the washing chamber. Supported by a built-in booster pump the fresh water is sprayed into the washing chamber with the bottom rinsing nozzles.

At the same time chemicals for the detergent solution are conveyed into the washing chamber.

There are 2 heaters with a power of 4.5 kW each in the washing chamber. As soon as a filling level in the tank has been attained, the magnetic valve will switch on and the heater will start heating the water to about 57°C. If there is too little current available to the customer it would be possible to disconnect the heater. This would ensure that there will be waiting times between the individual washing cycles. A control lamp shows that the desired temperature has been attained.

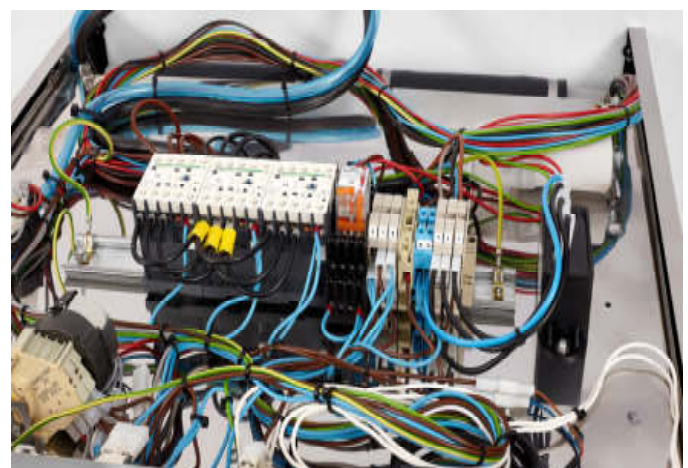
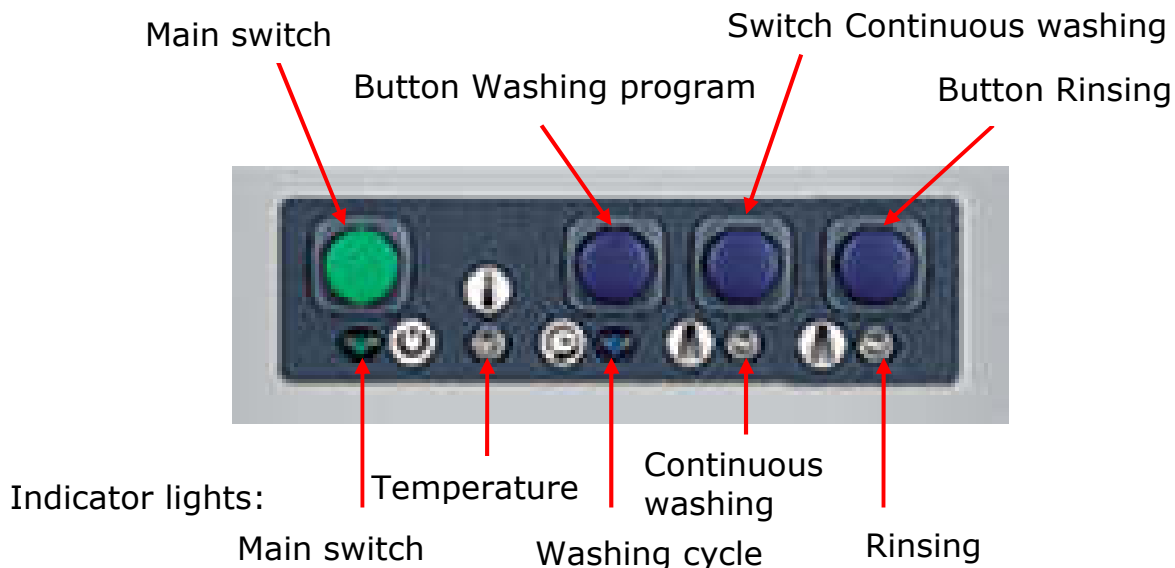
By pressing the start button the detergent solution (29 l) in the tank will be circulated in the washing chamber. The washing pump conveys 330 l/min. of detergent solution in the washing chamber and cleans the bottles inside and outside.

In each washing cycle a quantity of fresh water of about 8.7 l is rinsed in and around the bottles with special nozzles. This way, the detergent solution is rinsed from the inside of the bottles and also required chemicals are conveyed into the tank in order to guarantee another hygienic cleaning.

After the washing cycle the machine will automatically heat the detergent solution to the pre-set washing temperature. A control lamp shows that the machine is ready-for-operation and another washing cycle can be performed.

The chemicals which have been specially produced for our bottle rinsing machine can be used as liquid cleaning agent for all bottles. The enzyme powder supports the cleaning of milk bottles and yoghurt jars.

The customer is free to use any other chemicals besides the one recommended by us. However, in this case we cannot be held liable for the sterility of the bottles or for the complete rinsing out of the detergent solution.



The whole technology of the bottle washing machine is electromechanical. No electronics or boards included. Hence it is easy to handle and malfunctions can be remedied rapidly.

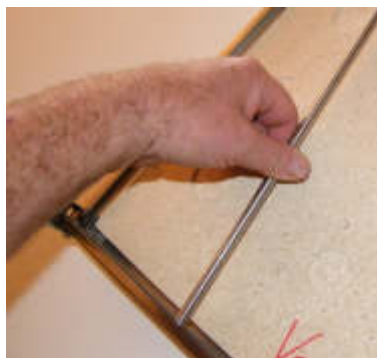
An automatic dosing for the liquid detergent is installed as a standard.



The new booster pump guarantees optimum fresh water rinsing after the washing cycle.

The recirculating pump for the detergent solution has a circulation rate of 330 l/min.

With our new basket system and the template included in the delivery, it is possible to exactly position any kind of bottles in the bottle basket and thus perfectly clean them from the inside and outside in the bottle washing machine (max. 20 pcs).



In this way, you are not bound to any bottle type and you can rapidly convert e.g. from long-neck bottles to flip top or NRW bottles.
Or from 0.5 l milk bottles, e.g. to 1.0 l milk bottles.

The new basket system – as individual as the product of our customers.



By using the conversion KIT for barrel cleaning, it would be possible to convert the bottle washing machine to a barrel cleaning machine within a few minutes.

Rapidly and cost-efficient just as the whole bottle washing machine.



**Please find further references under
www.flaschenwaschen.com/Referenzen**

Hello Erich,

Please find my comment as follows:

the new bottle washing machine is an enormous relief. It works reliably and clean. I could no longer imagine a life without it.

Warm greetings

Rudi



KALTENTALER
Brauhaus

Dear Erich,

Dear Martin,

I would herewith like to thank you for your brilliant bottle washing machine.

After looking for a long time for an easy yet best possible way to clean the bottles in our tavern brewery-I have finally found you.

In February 2016 I picked up the GS21 at your premises only two weeks after having placed my order.

Since that day I am absolutely happy and satisfied by our work.

The installation at the site in Kaltental was very easy and in just 20 minutes the machine was already operating. The consumption of detergent is very economic and this with best washing results. Also the final cleaning after the washing cycle could not be any easier.

All in all -a very thoroughly thought project. My compliments

Happy bottle cleaning!

Dominik Schempp

Master brewer

Dear Mr. Baumgartner, Dear Erich!

Our bottle washing machine has been operated for some time now and is working perfectly. The bottles are clean and this way I have no doubts to refill them with milk and deliver the milk to our customers.

Thank you very much for the good cooperation

Kind regards

Dear Mr. Baumgartner,

We are very content about the cleaning results of the bottle rinsing machine.

Kind regards

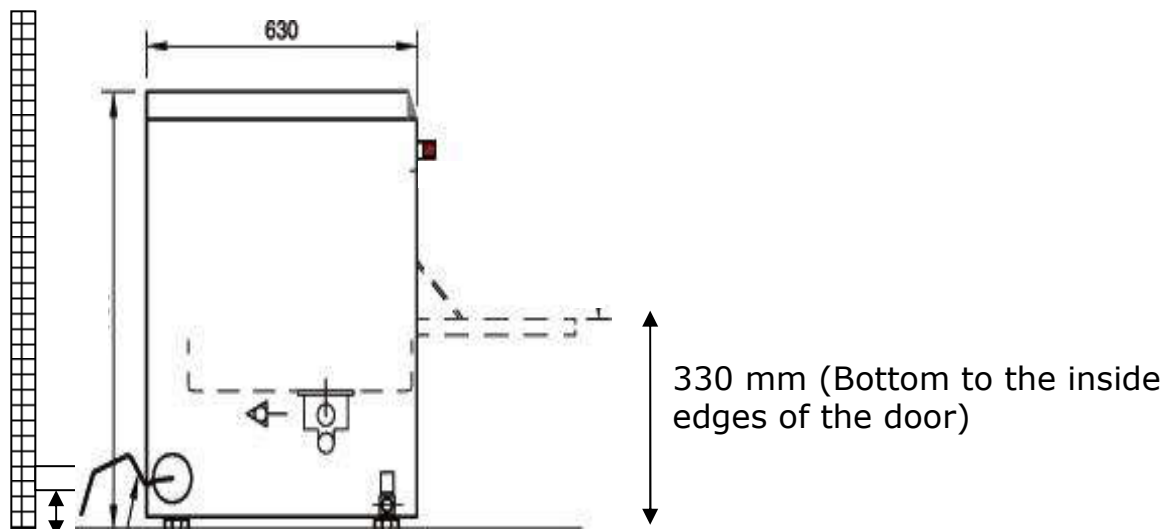
Dipl. Brmst, Michael Moritz
Authorised signatory / Master brewer



Brauerei Jos. Baumgartner GmbH
Franz-Xaver-Brunner-Str. 1
A-4780 Schärding
+43-7712/3110-33
+43-664/140 71 37
www.brauerei-baumgartner.at
www.facebook.com/brauerei.baumgartner



Important installation instructions: The water outlet should not be higher than 60 mm from the machine bottom.
Water supply: 2.5 bar permanent flow pressure, water supply line $\frac{3}{4}$ "
Power requirement: 10 kW 400 volts



Water drain 50-60 mm from the floor Machine height 820 mm

Technical data:

WEEE-Reg.No.:	DE 51131709
Hourly output	about 190 bottles/h
Number of bottles per rinsing cycle	max. 20 pcs
Rinsing time:	6 min 30 sec.
Pump capacity:	736 W
Circulation rate:	330 l. / min.
Tank heater:	2 x 4500 W
Overall connected load:	9736 W
Voltage:	400 volts
Tank contents:	29 l.
Water consumption/rinsing cycle:	about 8.7 l
Required permanent flow pressure:	2.5 bars
Water supply line / Water drain	¾" 50 mm Ø
Rack height:	Bottles of up to 400 mm
Basket dimensions:	500 x 500 mm
Equipment of baskets:	1 bottle basket
	1 crate carrier for beer crates
Dimensions:	
Width:	580 mm
Depth:	650 mm
Height incl. feet:	820 mm

Example of cost calculation for 10 washing cycles = 200 bottles:

Water consumption:		
Filling of 29 l + 10 washing cycles of 8.7 l = 116 l	= €	0,428
Power consumption:		
At a supply temperature of +6°C about 7 kWh current	= €	1,750
Consumption of chemicals:		
Factory setting 2.2g/l Fresh water = 255 g	= €	1,445

Thus, the cleaning of 200 bottles will cost about € 0,0181 per bottle.

Net prices plus VAT:

Beer bottle washing machine GS 21 incl.: 1 bottle basket, 1 crate carrier, dosing pump, strainer, booster pump, template and small items for the construction of the basket. Water inlet, water outlet, power connection and hose for chemical supply are pre-assembled.

Complete price (delivery time 2-4 weeks) € 4.000,--

Bottle basket extra € 500,--

Conversion kit for barrel cleaning € 500,--

Beer bottle cleaning chemicals 6 kg package € 45,--

Enzyme cleaning agent (intensifies the cleaning of e.g. milk bottles) € 25,--

The prices are subject to change. The General Terms and Conditions of the company Erich Baumgartner A-5222 Munderfing are applicable.

www.facebook.com/flaschenwaschen
www.flaschenwaschen.com